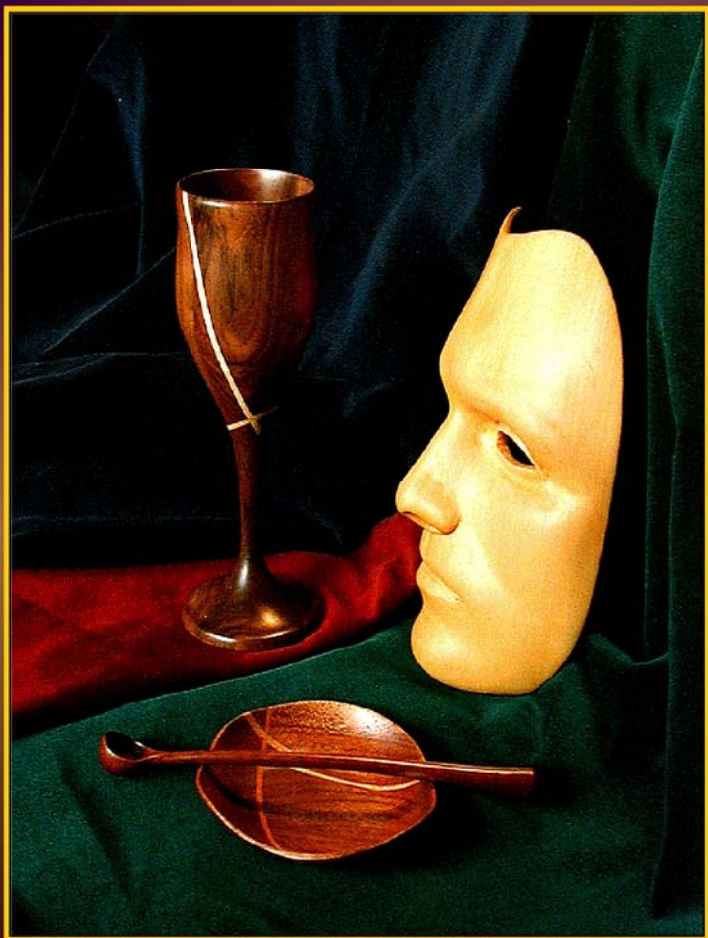


NightWing

of Melbourne, Australia



NightWing

of Melbourne, Australia

Summoning Pipes



Amerillo and Holly



Purpleheart and Holly



Mahogany and Holly



Pied Pipe

Blonde Ash, Dark Cherry and Silver Ash

Pipes

Heraldic, Summoning and Pied Pipes

9.2cm x 3.6cm x 3.6cm (smallest)

42cm x 7cm x 7.2cm (largest)

Uniphonic aerophones utilising the fipple-flute sounding principle. Made by hand from fine selected timbers. Celebrates a time when it was understood that all things in nature are commanded by music.



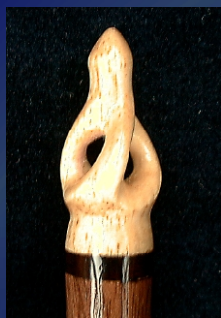
Fine Traditional Handcrafted Wands

33.2cm x 1.9cm x 1.9cm

Individually hand-sculpted wands constructed along traditional lines from carefully selected woods. The design is balanced and finished with complementary cross-grain blocking and contoured endcaps.

Each NightWing wand contains a traditional talisman at the core, set between twin shafts of the stem. In this case a single horsehair has been used.

The model pictured below is from the Temple series, featuring a hand carved spiral tip (see detail at right).



Charm Spoons

Individually sculpted from selected contrasting woods. Fashioned to mirror the articulated forms and lyrical beauty of the natural realm.



Blackheart Sassafras
and Ivory Ash



Vessels

16.0mm to 25.0mm in height

Hand-turned from selected Australian and exotic woods.

Combining the forms of flora and fauna to complement the natural origins of fine timbers, these alembic vessels seek to capture the essence of metamorphosis.

Poised between worlds, they provide glimpses into the realms of the imagination.



Silver Ash with Silky Oak insets

Philtre Cups

16.3cm x 4.8cm x 4.8cm (each)

Hand-turned from selected contrasting woods.

Characterised by understatement and elegant simplicity.
An enduring emblem of unity and lasting harmony
between friends or lovers.





Forest Morph Vessel

270mm (H) x 99.5mm (W) x 97mm (D)

Hand-turned and detailed from Purpleheart with contrasting incised motif in Canadian Maple.

This original sculpted vessel draws together colours and forms associated with the forest environment, including seed pods, native blooms, foliage and the roots and shafts of trees.

The contrasts of line form and colour project human perceptions and dilemmas into the quiet of the natural realm, symbolising our connection to the earth and its many planes of life.

Forest Guardian Vessel

327mm (H) x 114mm (W) x 114mm (D)

Hand-turned and sculpted from English Ash, Canadian Maple and Striped Ebony.

This original artwork provides a visual representation of the protective strength and enduring life force of the forests of the earth, symbolising the duality in nature (as within human nature) in the contrasting character of the woods.

The 'branches' echo the human hand as it encloses and safeguards, while the top of the vessel provides a sense of energy and movement.

North American and European timbers combine in alternate quadrants to form the stem while the cup and base are fashioned from an African Ebony. The vessel was conceived and created in Australia. This joining of elements from the four corners of the earth seeks to show that wood (and life) is not bound or contained by political or geographic boundaries





Harlequin Dream

235mm (H) x 317mm (W) x 48mm (D)

Blackheart Sassafras, Silver Ash, Poplar and Australian White Beech.

Portrays a dream state in which sounds from the external world intrude upon the surreal nightscape of the dream, so that the dreamer is caught between worlds.



Room for Dreaming

183mm (H) x 172mm (W) x 219 mm (D) ~ Silver Ash, Walnut and Ebony.

An evocation of the paradoxical sense of calm and adventure which we associate with a dreaming state in which we have the sensation of moving freely and observing vivid events which portend the promise of the future.



Huon Pine
12.7cm x 8.7cm x 5.8cm



Silver Ash
12.8cm x 9.2cm x 4.6cm



Huon Pine
12.8cm x 8.7cm x 5.2cm

Sylvan Masquettes

Reveals the benevolent and watchful features of one of the traditional guardians of the forest - the Sylvan wood sprites.



NightWing®

Hand sculpted artifacts
featuring Australian and exotic woods

Ray Cologon
Sculptor

ABN: 22 207 533 285

PO Box 20, Dallas
Victoria, Australia 3047

Ph 0409 309 143
+ cologon@nightwing.com.au
www.nightwing.com.au

THE ARTIST

NightWing sculpted artefacts are designed and created in the studio of Melbourne artist, Ray Cologon. Each piece, large or small, is individually handcrafted and meticulously finished.



Cologon's work as a sculptor spans twenty-five years. His work shows a great affinity for natural materials and frequently features precious and exotic woods, sometimes combining them with other media. The works combine traditional and modern techniques to achieve novel and sometimes surprising effects. The work is fine, and exhibits a consistently high standard of quality and craftsmanship.

Born in Sydney, Australia, Cologon moved to Melbourne to attend art school in the nineteen-seventies, subsequently graduating with a major in sculpture. His work is highly detailed, original, imaginative and characteristic in its use of flowing natural and organic shapes and forms.



NightWing Enterprises

ABN: 22 207 533 285

PO Box 20
Dallas, Victoria
Australia 3047

Ph +61 3 9309 1434

Fax +61 3 9309 8273

Mobile 0409 309 143

Email cologon@nightwing.com.au

www.nightwing.com.au